

Ways To Be More Precise, Effective With Fertility Of No-Till Corn

Bob & Monte Bottens
Bottens Family Farm
Cambridge, IL



Henry County, IL

- Home to
 - Past History
 - Most hogs in U.S.
 - Most Oats grown in Illinois
 - Today Narrow row corn Promoter
 - Calmer Corn Heads & Marion Calmer








Springfield, Ill. • Jan. 15-18, 2014
An Honest No-Till Education



Overview for our farm 2013

- Current Production Practices and Equipment Capabilities
- What we learned in 2013
 - Fertilizer Opportunities
 - Impact of Drainage Systems
 - Green Seeker-NDVI
 - In-Row Trial



Nutrient Application Opportunities

- Pre-plant
- At Planting
- Side-dressing
- Foliar feeding



Pre-Plant

- Broadcast dry 0-0-61 & 11-52-0 by soil test, if needed.
- No Nitrogen fall or spring pre-plant
- All No-Till
 - No disturbance
 - Planter Only (no wavy coulters)



At Planting

- In-furrow starter mix
 - Ignition (9-20-3), Accelerate (Micros), Rev-Up (Bio-Chemical)
- 3 x 2 beside row Mixture of:
 - UAN 32 for 75-115 units total N
 - 4-10-10
 - Thio-Sul 12-0-0-26

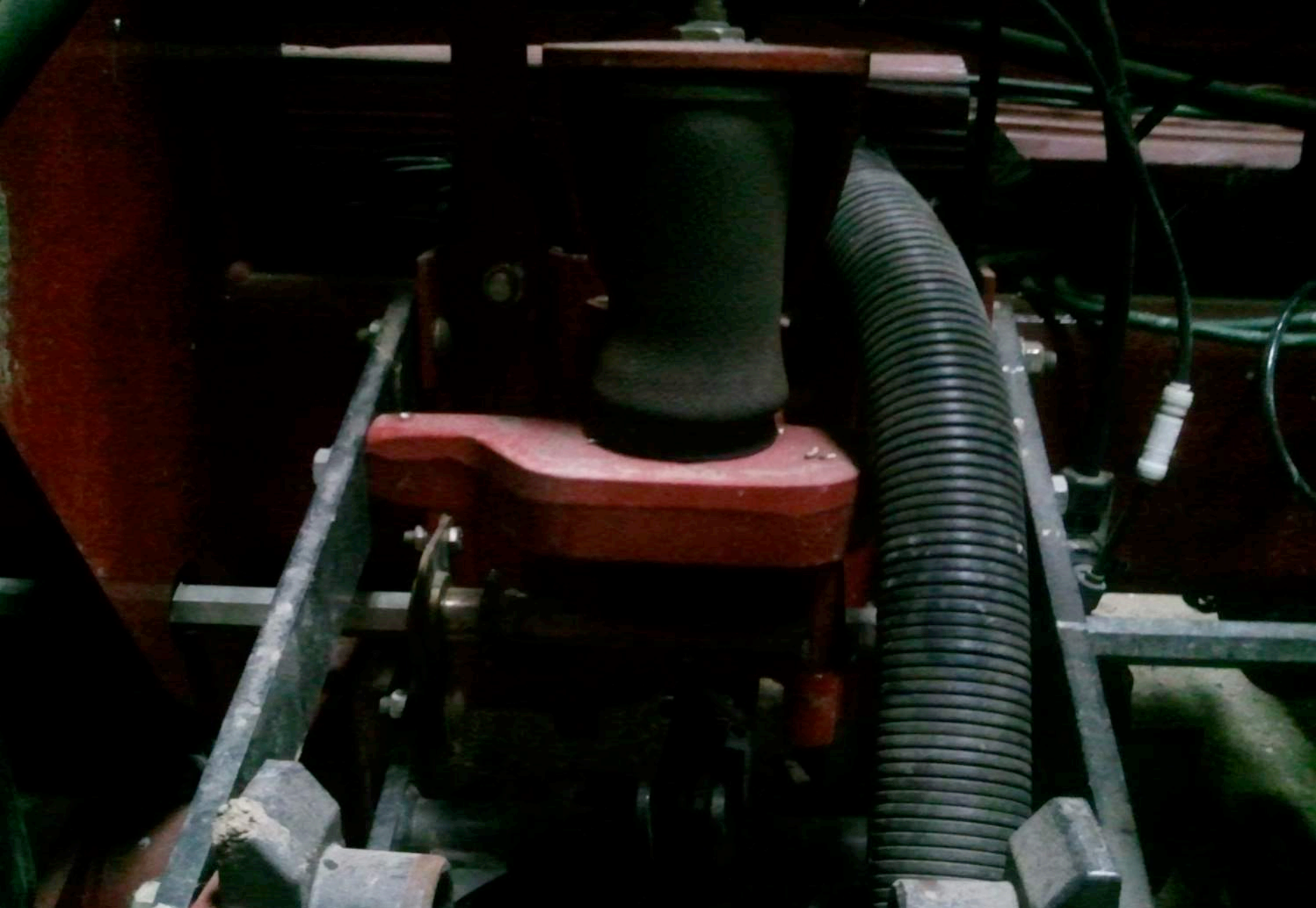


3" x 2" Nutrition and Residue managers



3" x 2" Nutrition and Residue
managers





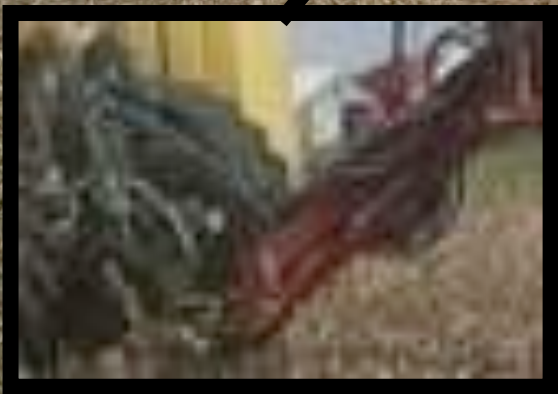
Down and up pressure 20/20 AirForce

T
h
i
o
-
S
u
i

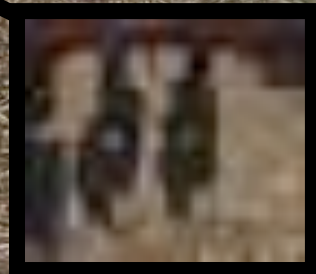
4
-
1
0
-
1
0
0

I
n
-
R
o
w
S
t
a
r
t
e
r

U
A
N
3
2



**3 Product mixing
VRA Pumps &
Controls**



3x2 NPK

YIKES! TOO MUCH TIME!

- 4 compartment truck tender (60 acres per fill)
- 17 Minutes to refill every 2 hours (26.3 vs. 30 acres/hour)
 - In-Row Starter Mix (5.6 gal/A) w/insecticide in field
 - UAN 32 to fill pull behind (22 to 40 GPA)
 - 4-10-10 (15 GPA)
 - Thio-sul (5 GPA)
 - 3 transfer pumps running simultaneously
- **WARNING...Takes more time at Harvest Too!**



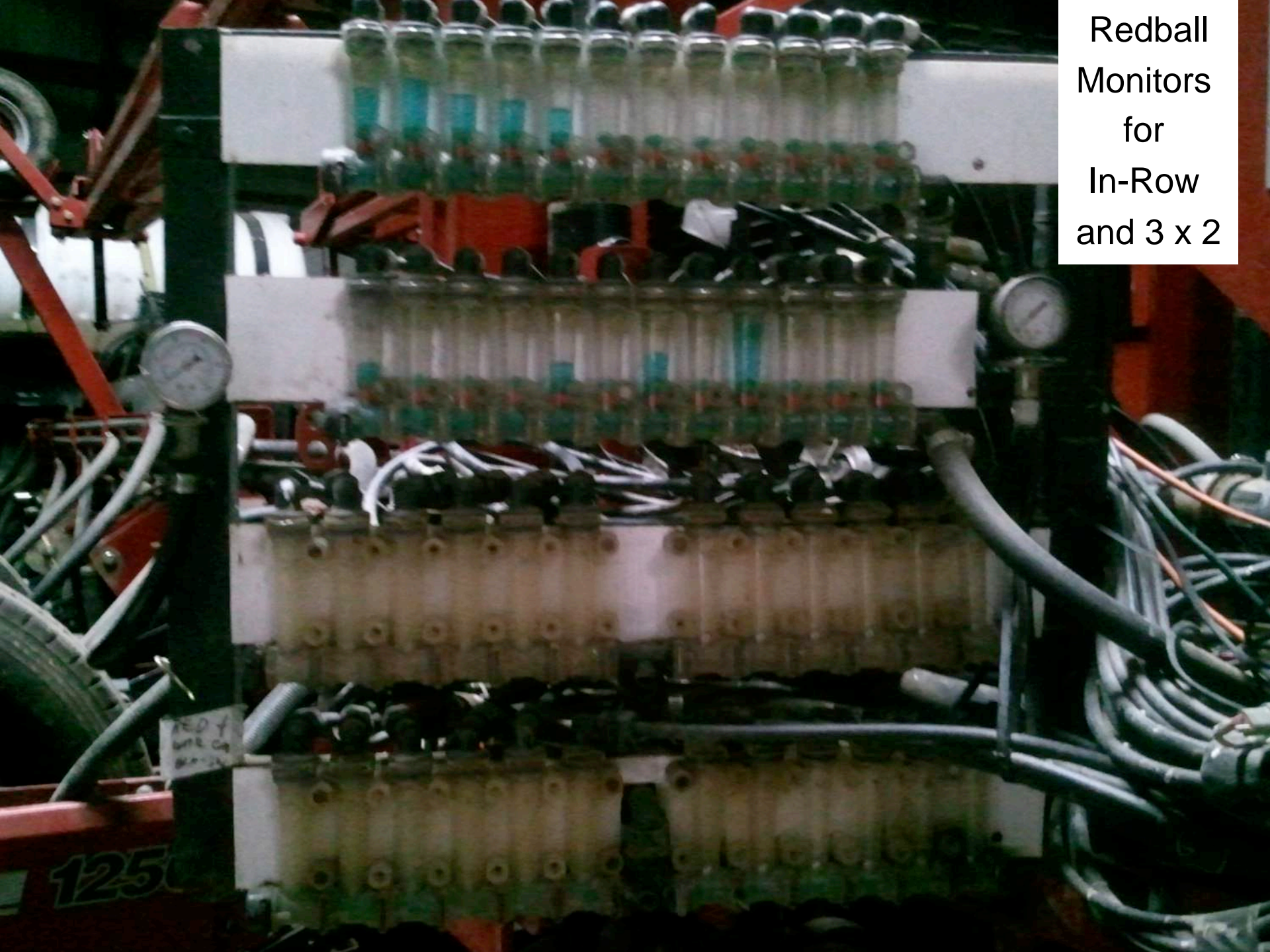


**4 compartment truck with 3 Pumps
with suck and blow**

3 Product mixing VRA capable



Redball
Monitors
for
In-Row
and 3 x 2



Insecticide injection pump into on-seed fill.



Roadmap to success

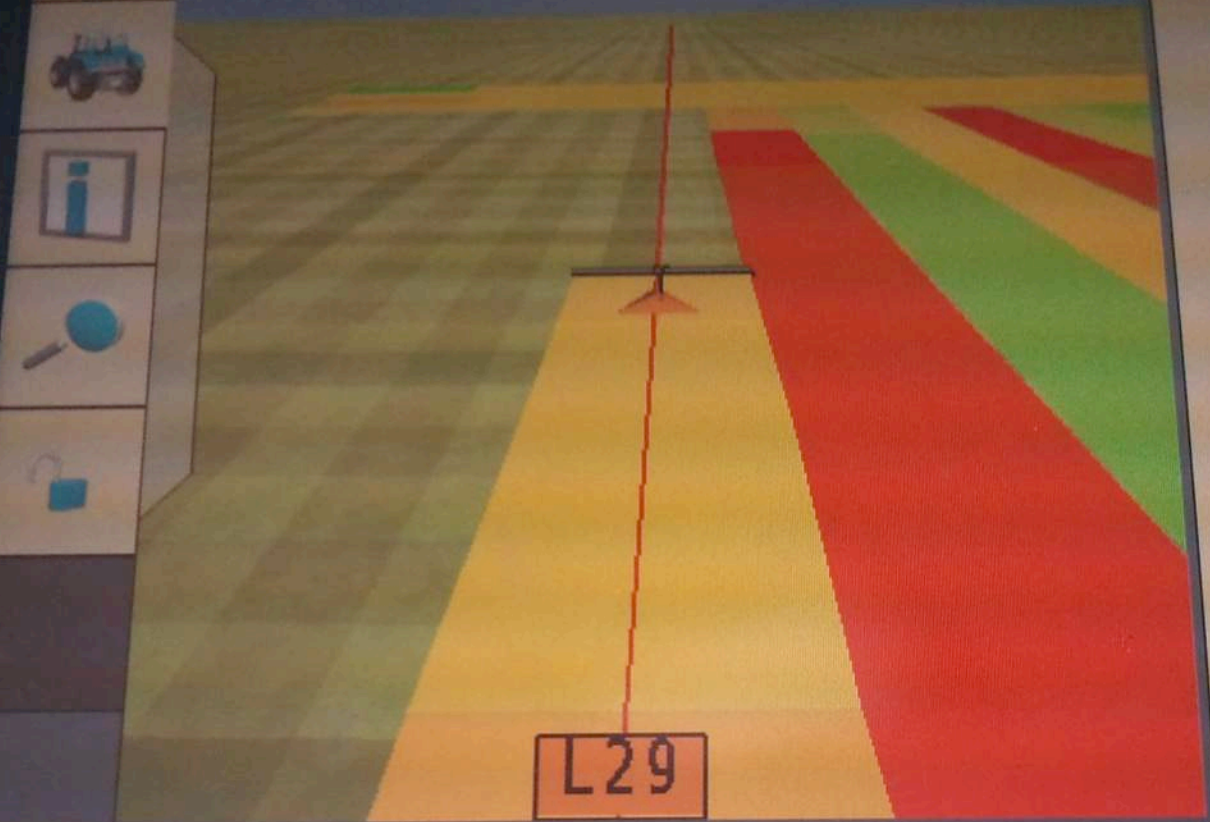
- History of your fields
 - Know where you came from to know where you are going
 - Data-Data-Data
 - Record everything-every pass-everywhere every year



Applied Rate
29.12 gal/a

N

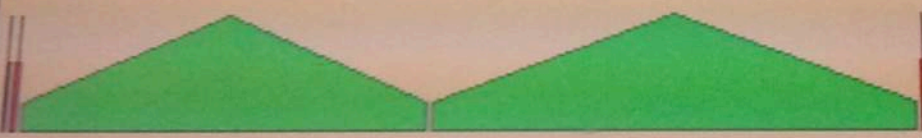
Location 1: 32 sidedress
Target 29.00 gal/a
Actual 29.06 gal/a



Record
Every
Pass

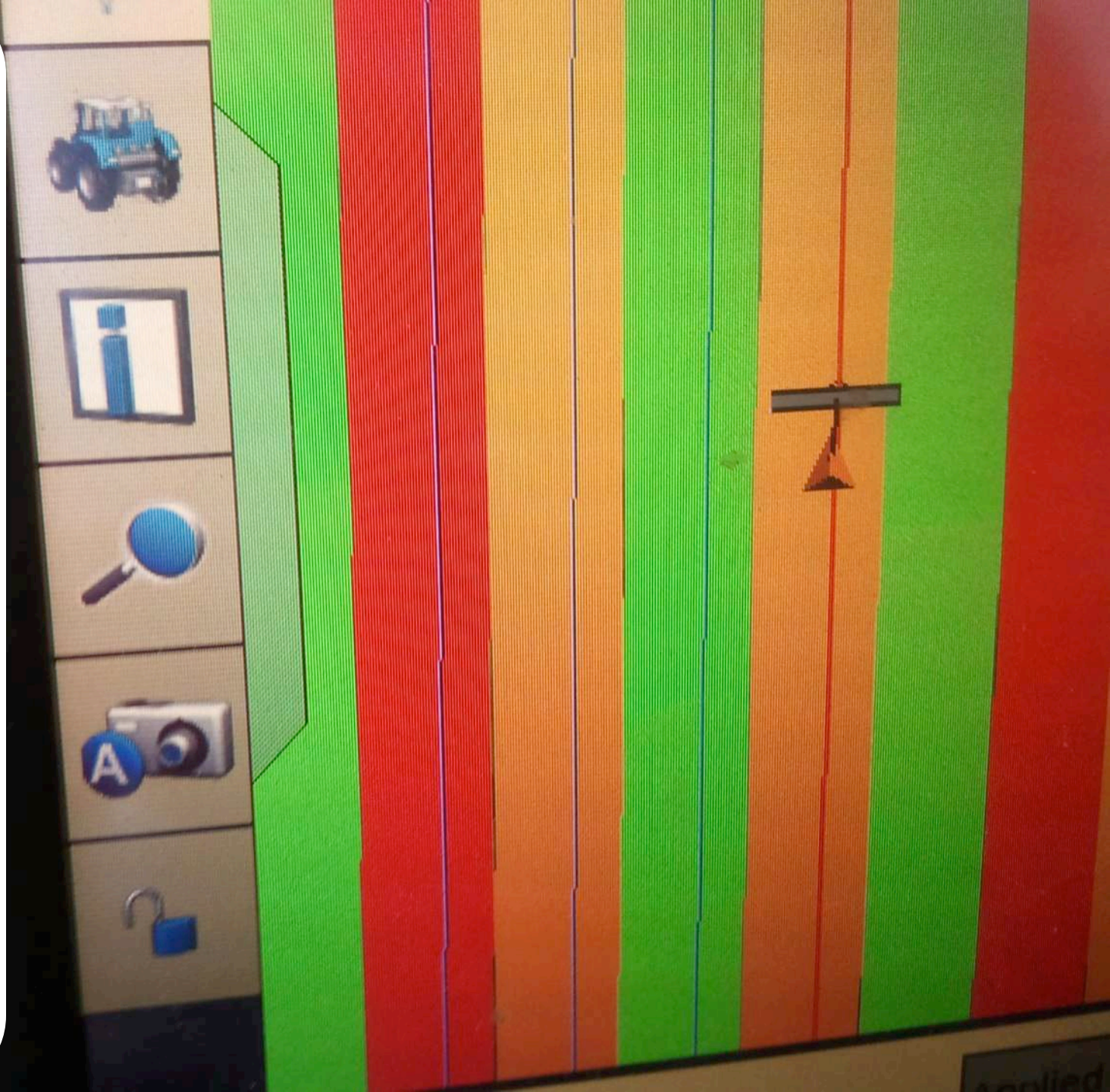
Side-
dressing

Location 1: 32 sidedress



In Cab Application Playback

3
application
rates
pictured



Soil types

Slopes

A: 0-2%

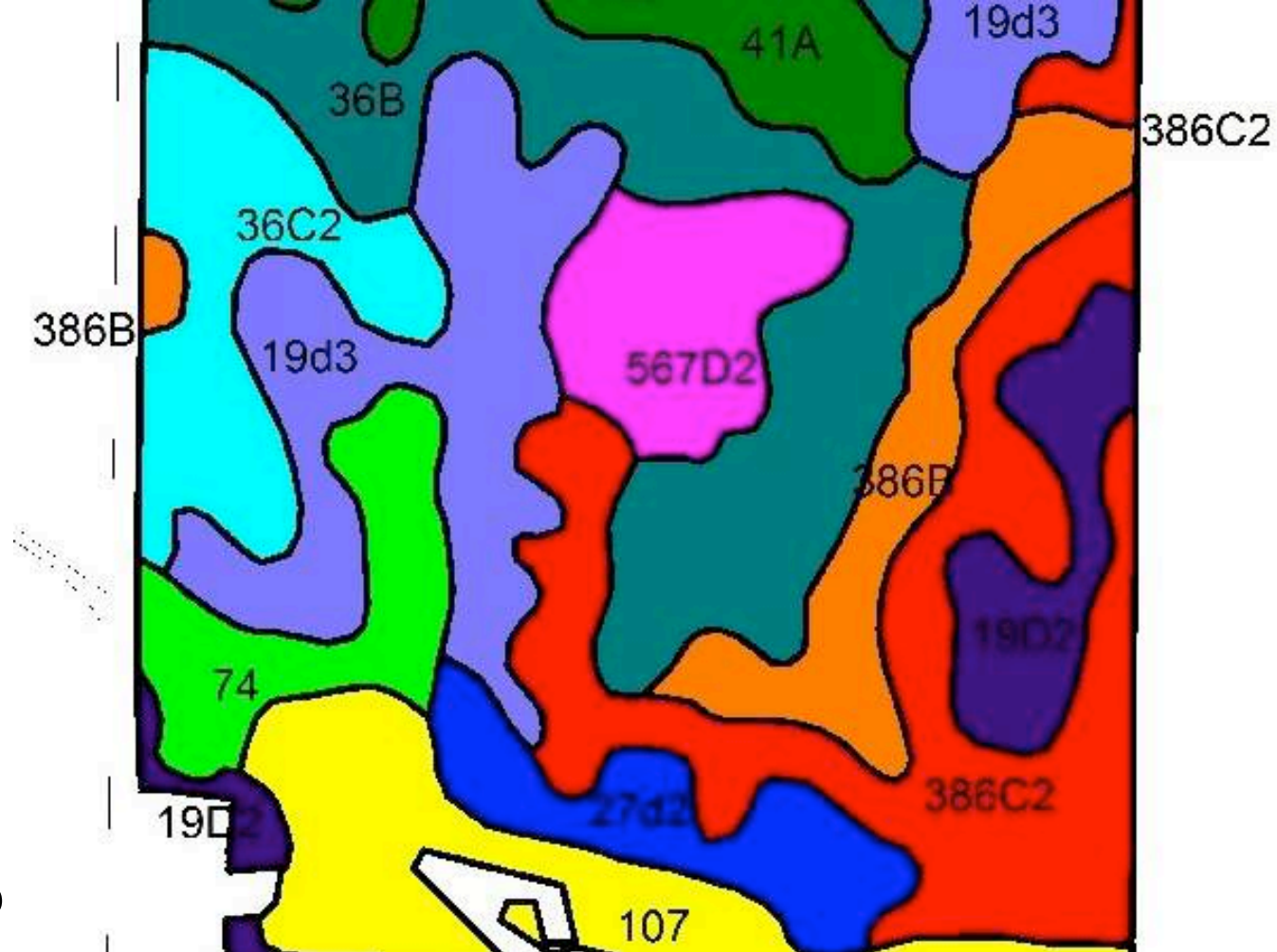
B: 2-5%

C: 5-10%

D: 10-18%

Slopes Simplified

- A: AAHHHH
- B: Not Bad
- C: Come on
- D: Dang It's Steep



Corn on Beans Planted 5/2/13



Corn on Corn Planted 5/8/13



Picture Taken 6/7/2013



6/14/13



6/22/13



NH SP275 120 Ft sprayer, power for toolbar



Green
seeker
Sensor
4 on 12
rows

The logo features a stylized sun or flower icon with a central 'O' on a yellow background. To the right, the text reads "22nd Annual National No-Tillage Conference" in green and black. Below this, it says "Springfield, Ill. • Jan. 15-18, 2014" and "An Honest No-Till Education" in black.

22nd Annual
National
No-Tillage
Conference
Springfield, Ill. • Jan. 15-18, 2014
An Honest No-Till Education



8/15/13



8/15/13

Maybe
Roots
Make a
Difference?



8/18/13



Drainage

- Works (needed) for us



4
hours
after
rain



24
hours
after
rain



1.

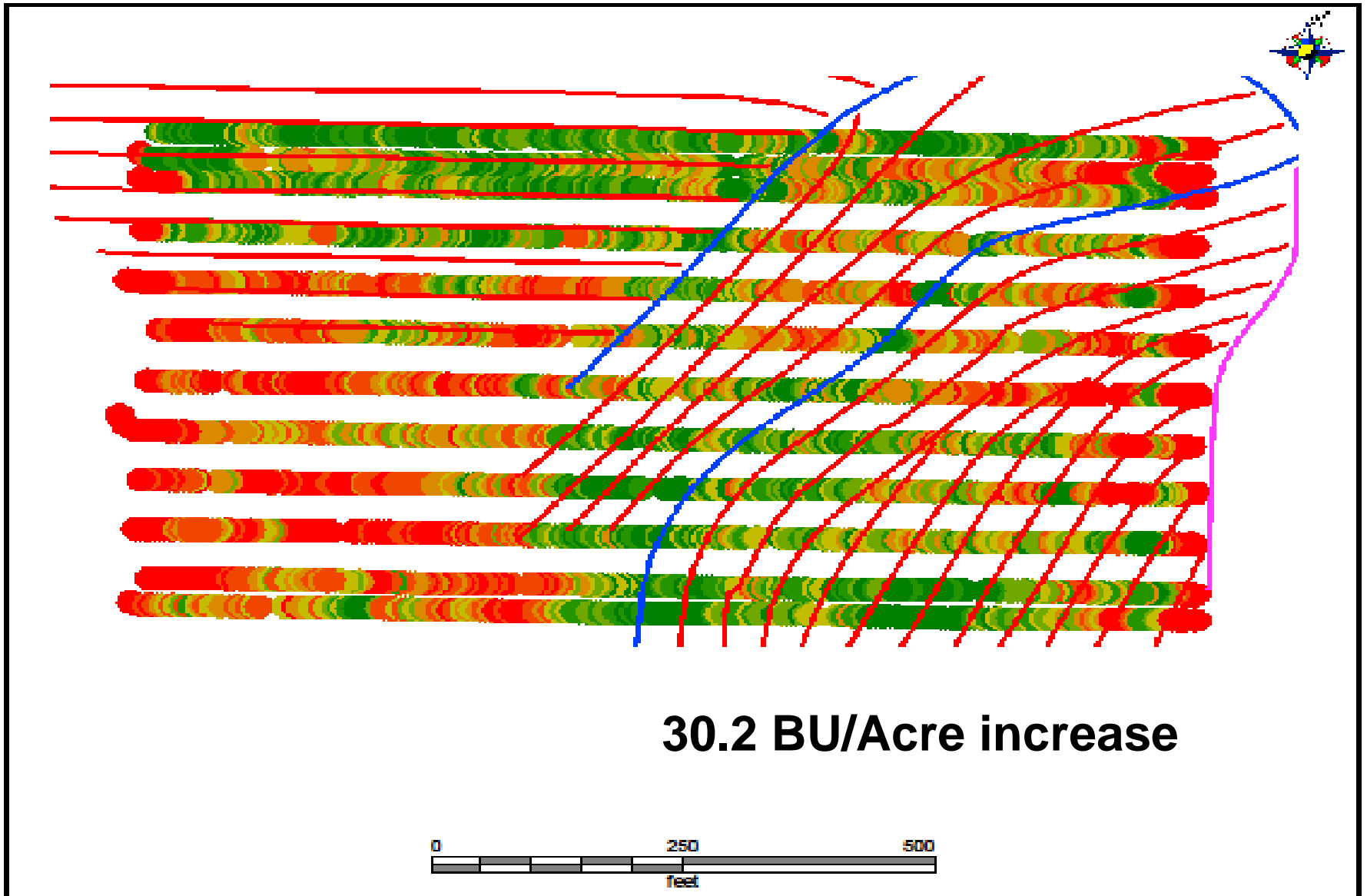
48
hours
after
rain



96
hours
after
rain



Hwy plot area



30.2 BU/Acre increase





Tiling 2012 & 2013

NDVI (Normal Difference Vegetative Index)

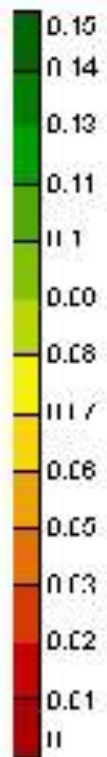
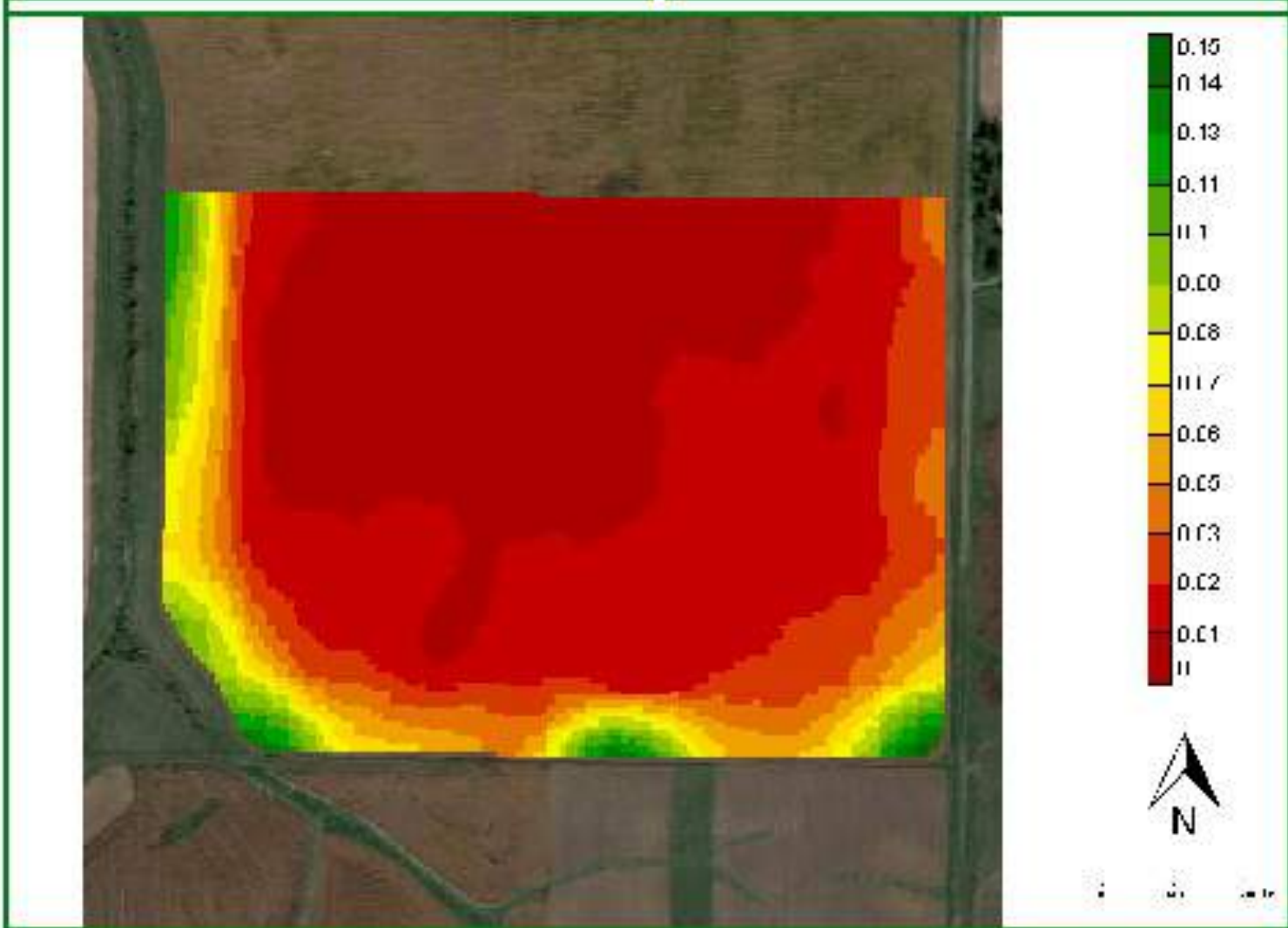
- Greenseeker
 - Toolbar
 - Handheld
- Aerial imagery 5/13,7/4,7/11,8/10,8/16
 - Weather
 - Timeliness



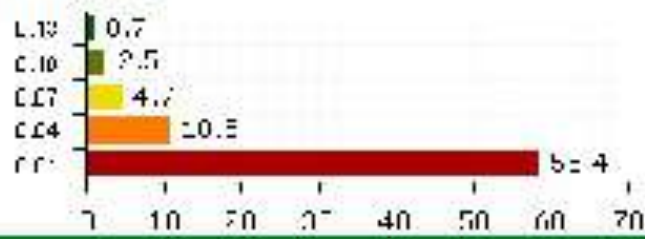
NDVI (Normal Difference Vegetative Index) readings

- What to expect
 - Readings throughout season
 - Application anomalies

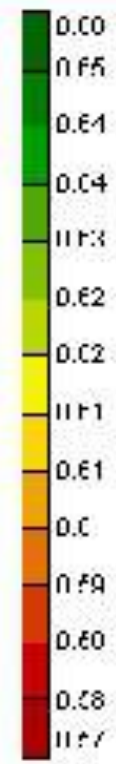
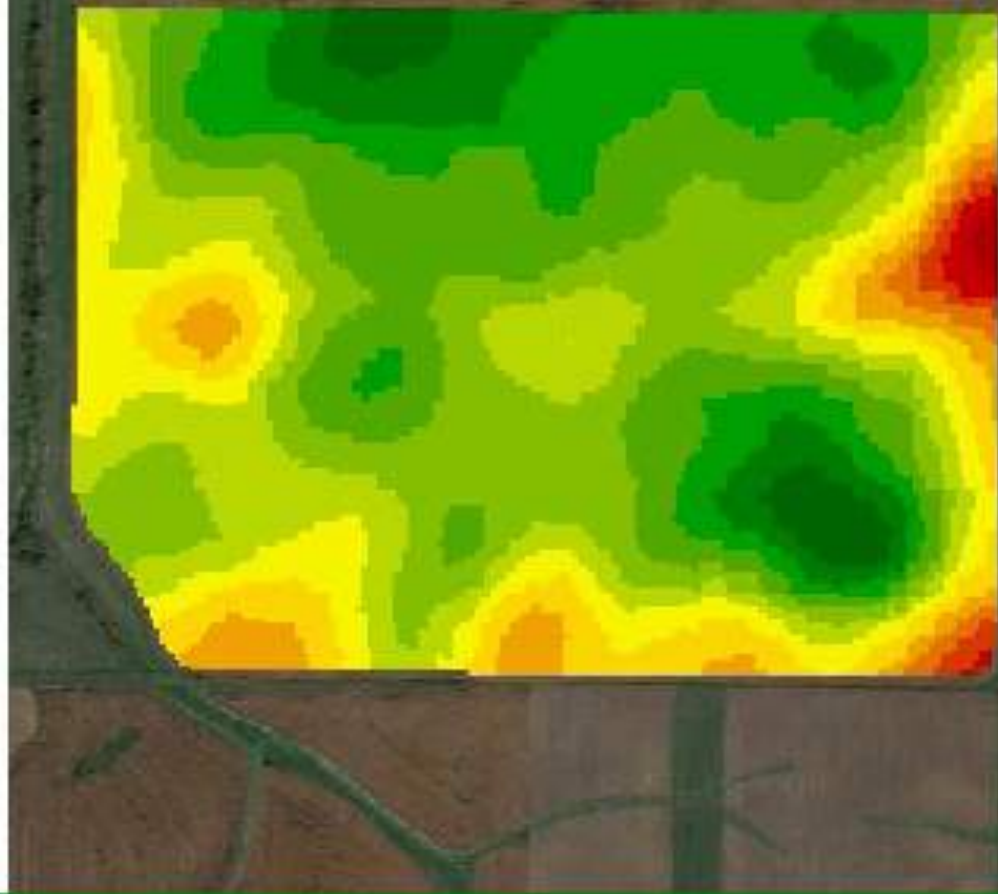




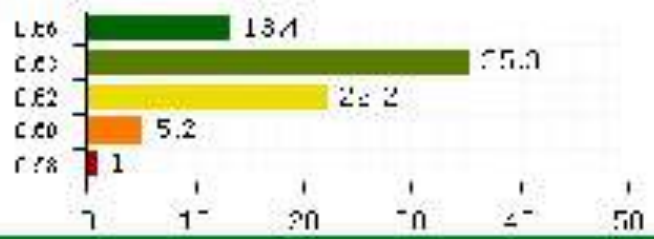
NDVI Acreage



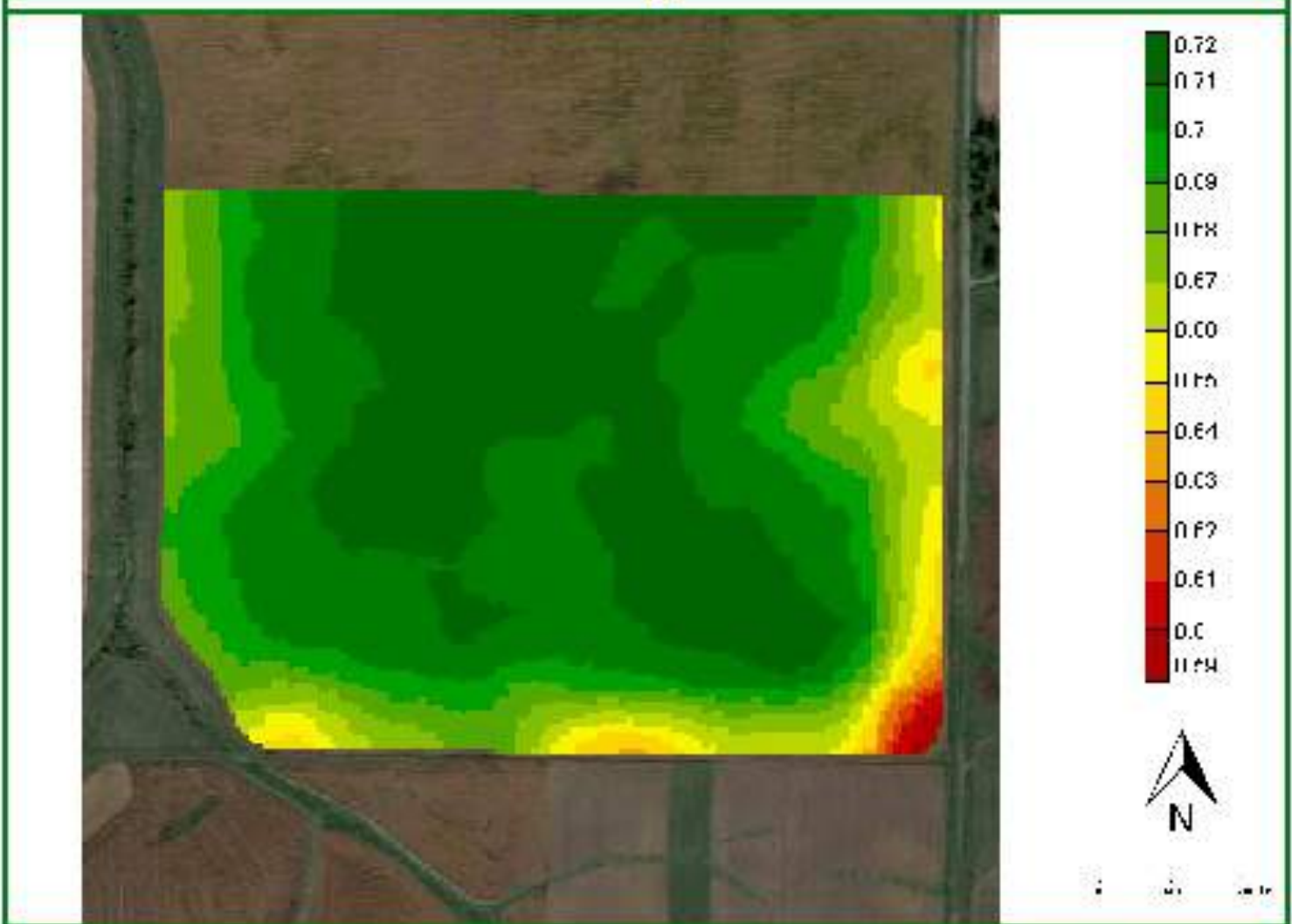
Imagery date : 5/13/2013
 Map created on : 6/3/2013



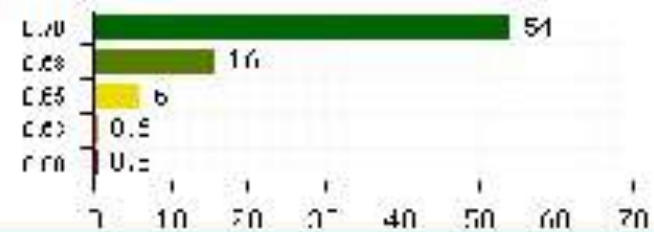
NDVI Acreage



Imagery date : 7/4/2013
 Map created on : 7/9/2013

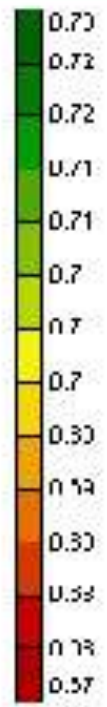
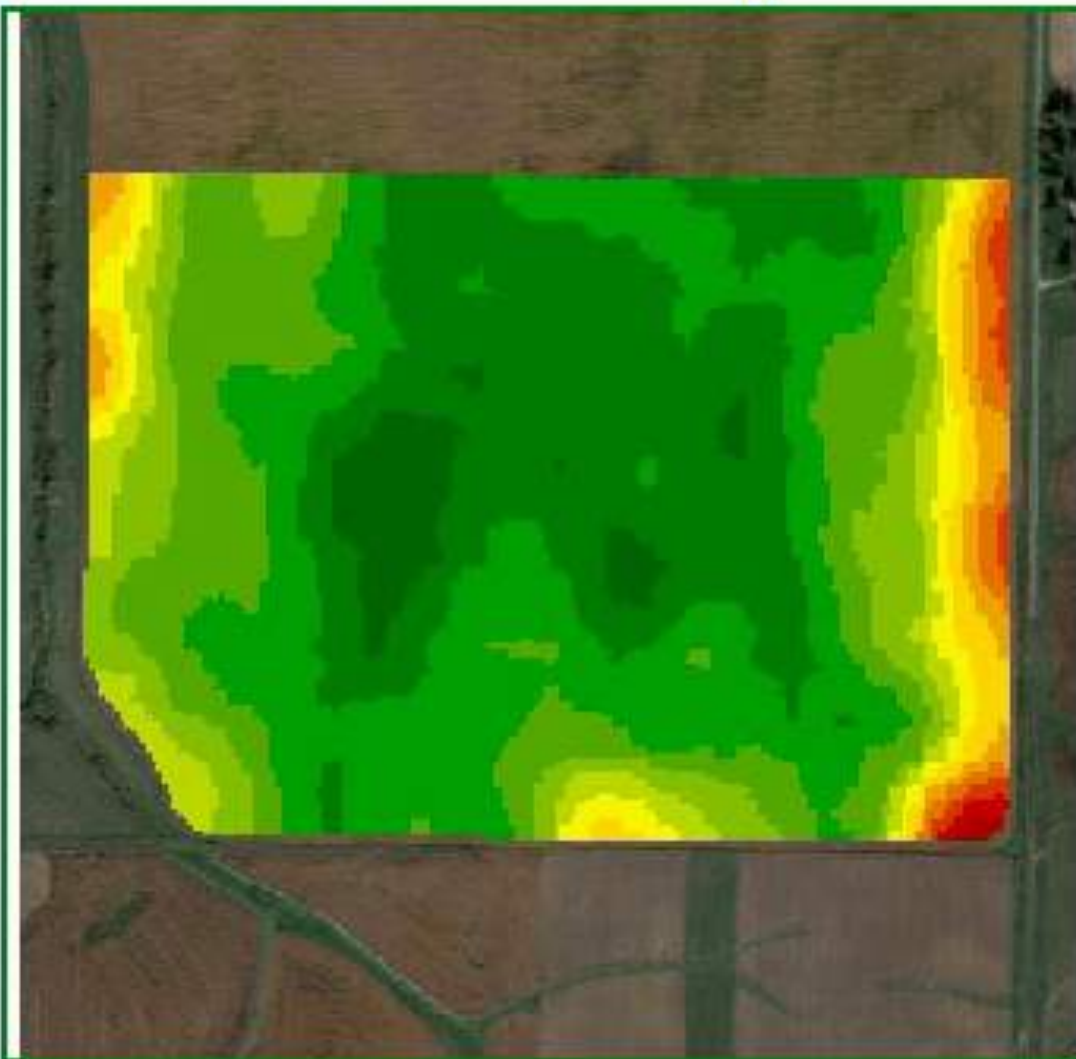


NDVI Acreage



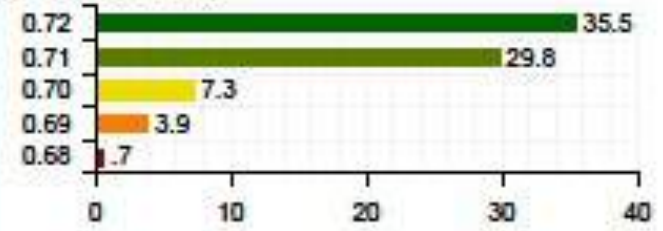
Imagery date : 7/11/2013

Map created on : 7/19/2013



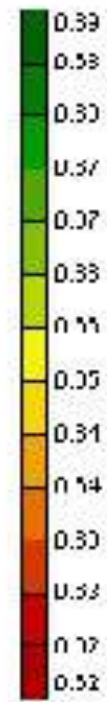
0 100 200 300 400

NDVI Acreage



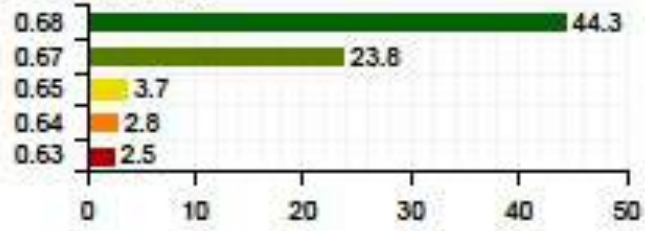
Settings

Imagery date: 8/10/2013
 Map created on: 8/20/2013



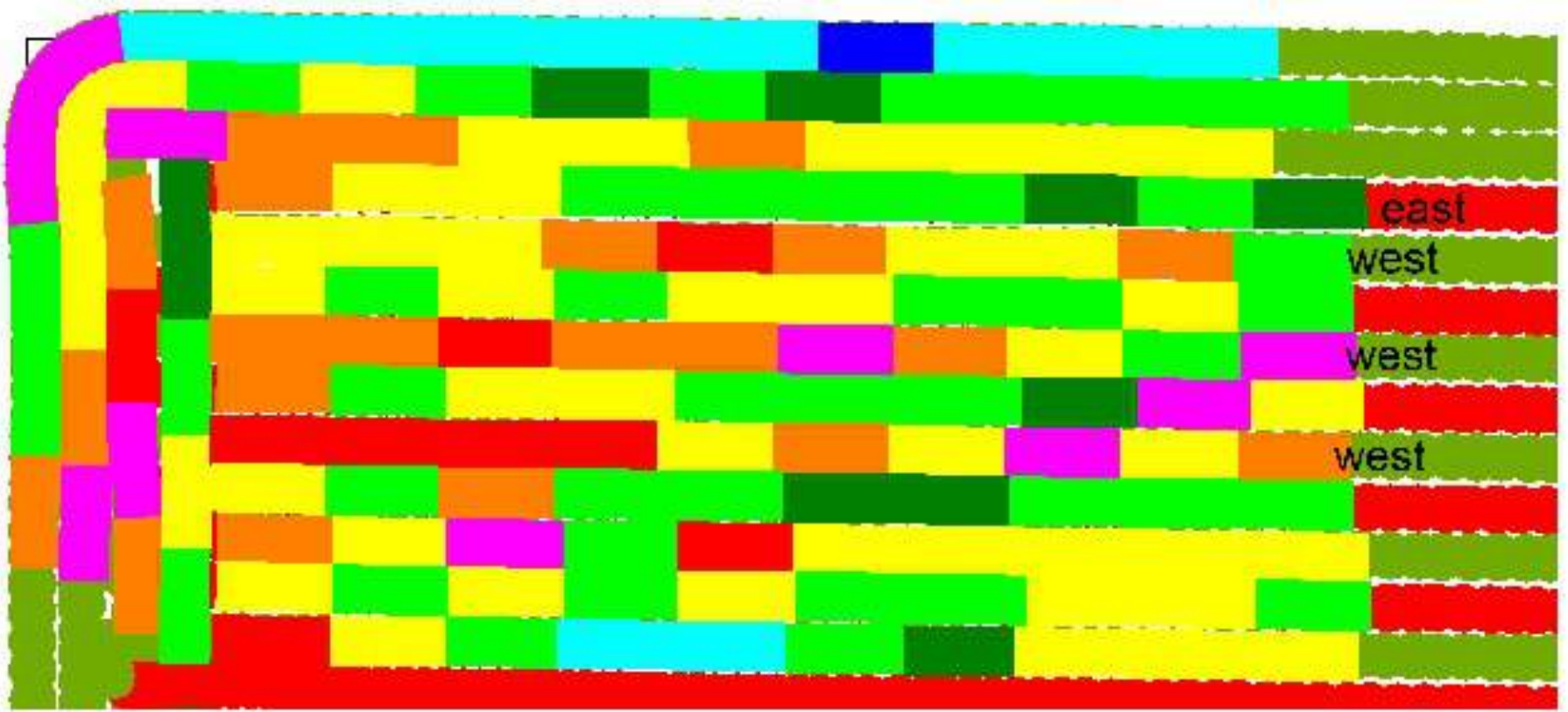
0 100 200 300 400 500

NDVI Acreage



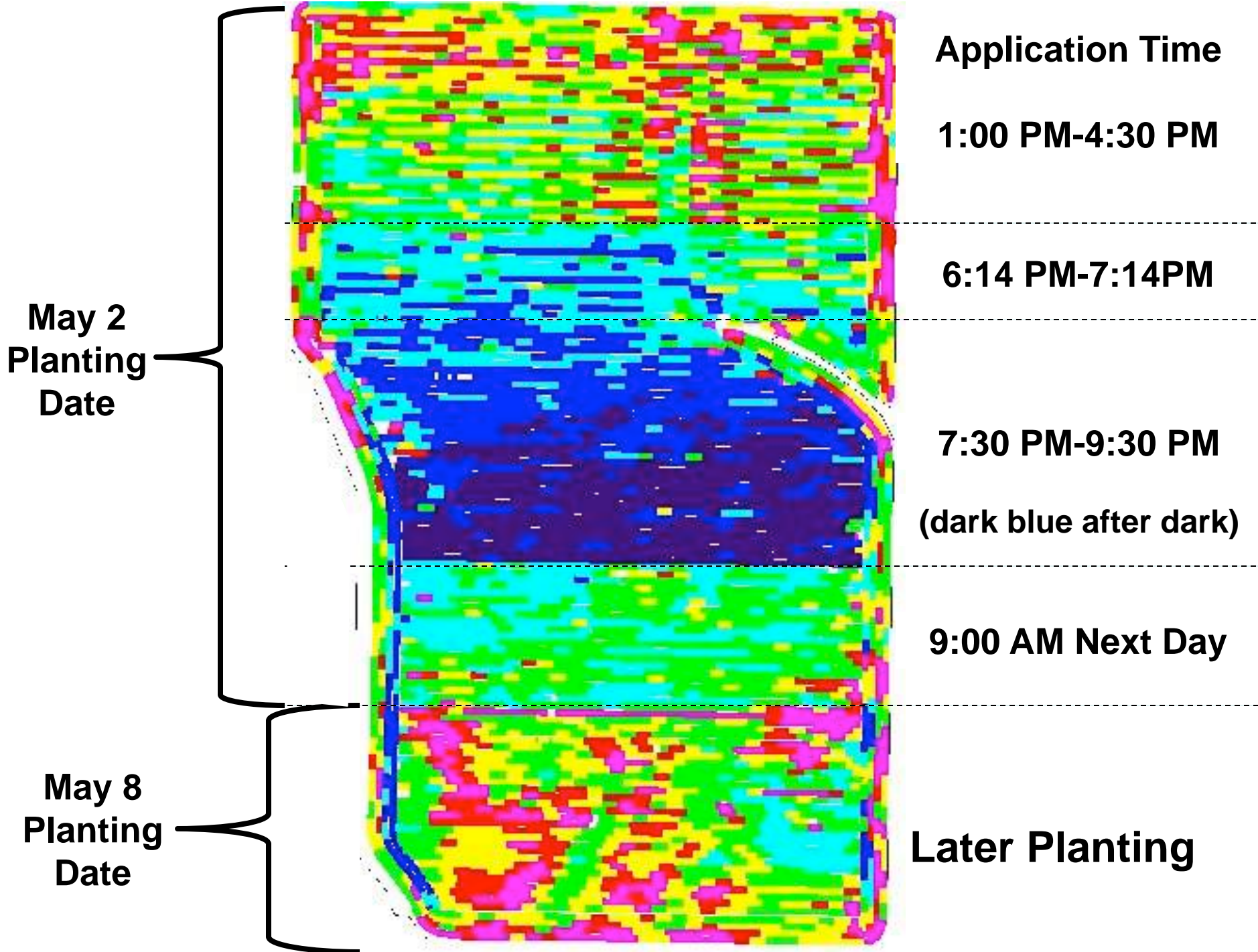
Settings

Imagery date: 8/16/2013
 Map created on: 8/20/2013



Direction is everything



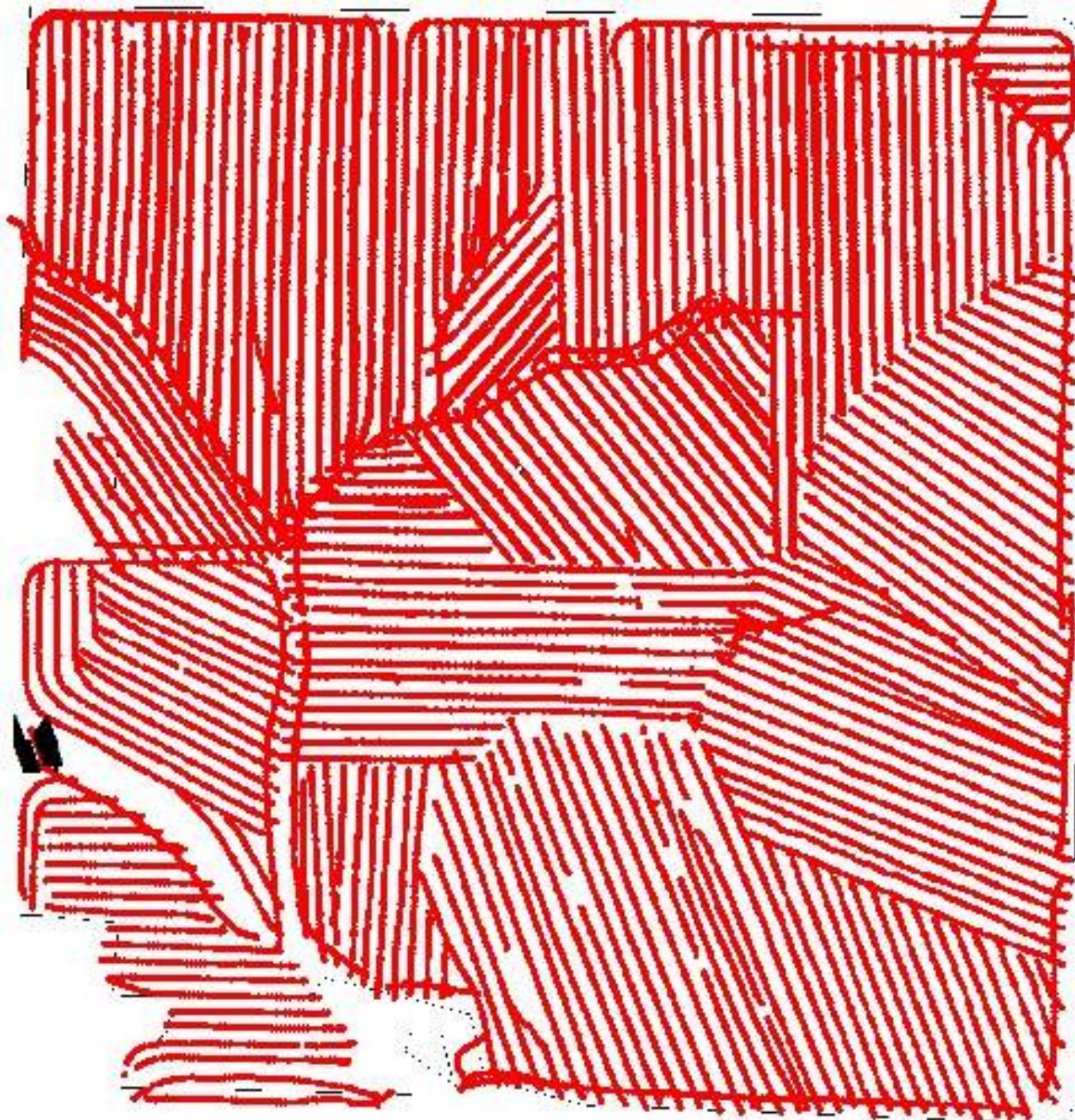


Testing to get Results

– Side by side replications

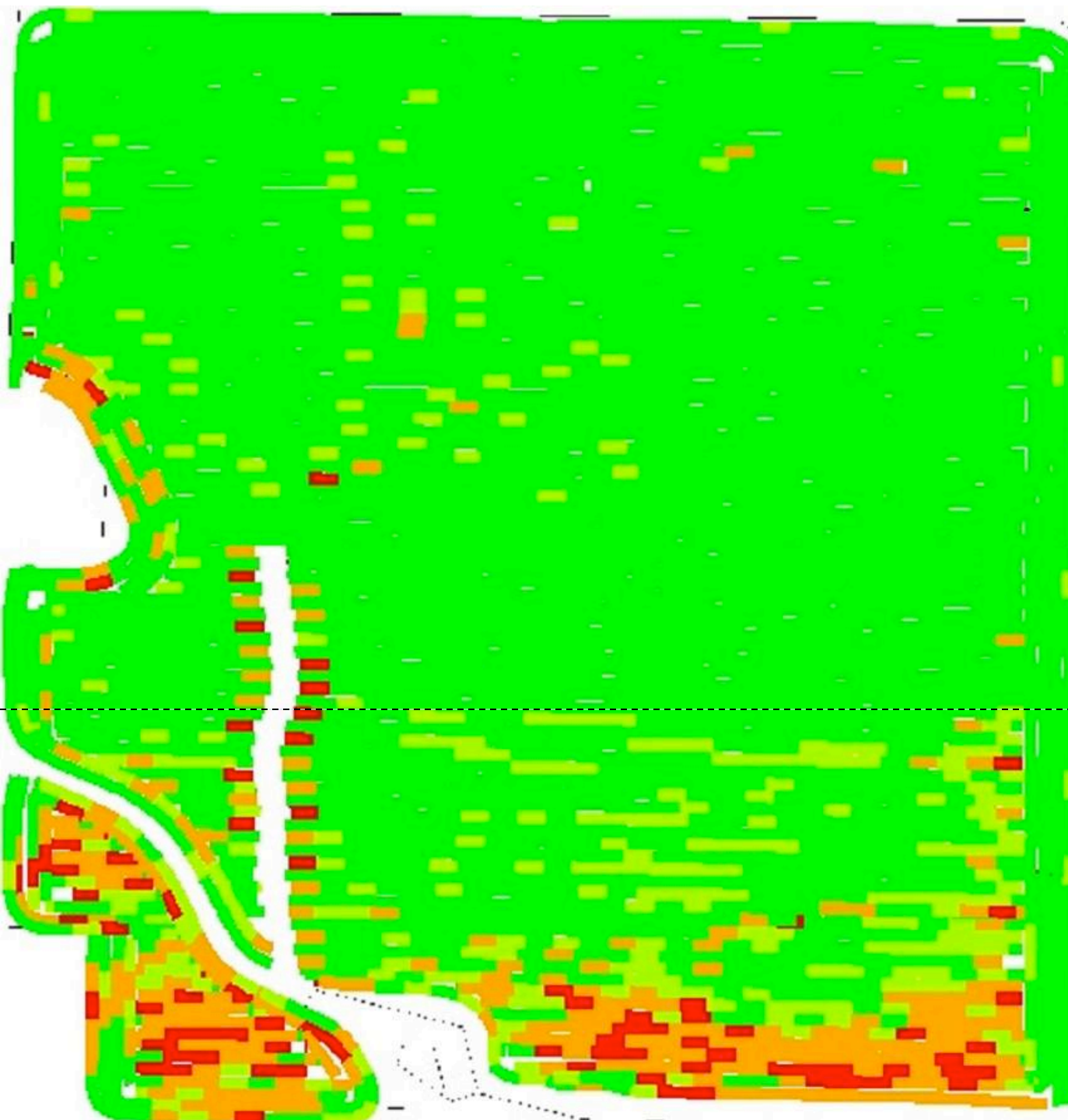
Start with consistent field and history





Pattern tiling 1998





**N Rates
Constant on
Starter Trial
Area**

**Turned on
Greenseeker
VRA**

Aug 15



**22nd Annual
National
No-Tillage
Conference**

Springfield, Ill. • Jan. 15-18, 2014
An Honest No-Till Education



ANP	204.0	3.1
Coop	200.9	
Coop	203.7	3.2
ANP	207.0	
ANP	209.6	12.5
Coop	197.2	
ANP	197.4	2.9
Coop	194.5	
Coop	194.9	7.7
ANP	202.6	
ANP	199.7	3.9
Coop	195.8	
AVERAGE	200.4	5.6

ANP Versus Coop Trial

Plot Area Results

North Side of Field

Consistent soil

Weighed with scales



ANP	201.1	3.0
Coop	198.1	
Coop	200.7	-0.9
ANP	199.7	
ANP	203.0	6.5
Coop	196.5	
Coop	191.3	4.0
ANP	195.2	
ANP	205.7	8.9
Coop	196.8	
Coop	197.4	2.2
ANP	199.6	
ANP	210.4	-0.9
Coop	211.3	
Coop	205.4	8.0
ANP	213.4	
ANP	209.3	3.0
Coop	206.3	
Coop	192.9	2.5
ANP	195.3	
ANP	204.8	11.2
Coop	193.6	
Coop	198.0	-2.2
ANP	195.8	
ANP	193.5	2.7
Coop	190.8	
Coop	185.8	1.5
ANP	187.3	
ANP	187.6	8.9
Coop	178.7	
Average	190.7	4.4

ANP Versus Coop Trial

Rest of Field

Variable Soil

Yield monitor 1 load per pass

Entire Trial Area Difference
 4.4 bu/a @ \$4.25/bu = \$19.25/a
 Cost Difference = \$12.77/acre

\$6.49/a ANP advantage



Compaction Prevention 101



Next Year Starts Here!





View with Stalk Stompers

Dec 1, 2013



Have we helped you??

- History—Data
- Prior yields—Data
- Drainage—Data
- Applications—Data
- Yields by ? ? ? ?--Data



Recommendations

- Testing
 - Are you testing products or people
 - People
 - Represent products
 - » Products are always there
 - » People should understand your fields to recommend products to you



Wishing you a Successful 2014!

